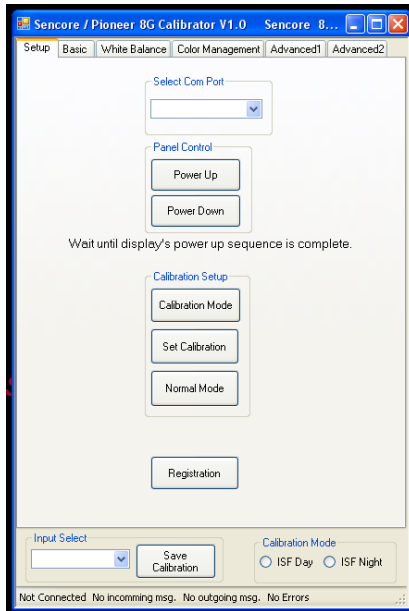


## Basic Instructions for the Pioneer Elite ISF C3 Calibration Tool (Models – PRO-950HD/PRO-1150HD/PRO-110FD/PRO-150FD):

Please note: This program is meant to be utilized by ISF Calibrators who have calibration tools but may not own ISF C3 software.

1. Install the program (from the .zip file).
2. Start-Programs-Sencore-Pioneer-Calibration Tool



3. Sequence
  - a. Connect straight through RS232 cable between the computer and display.
  - b. Select COM port
  - c. Click on Power Up button (this will power up the display)
  - d. Click on Get Model (implements the correct password)
  - e. Click on Calibration Mode (puts the set in calibration mode – ready to accept commands)
  - f. Select the input you want to calibrate (Display Input)
  - g. Select ISF Day or ISF Night mode
  - h. Calibrate Front Panel Controls
  - i. Calibrate Gamma
  - j. Revisit Front Panel Controls
  - k. Save after each input/mode is calibrated
  - l. Repeat steps F-K for each input and mode
  - m. Click on Set String – this implements your calibration in the set and makes the Day and Night modes available to the user.
  - n. Click on Normal Mode
  - o. You are done!